

audison



prima

PRODUCT NEWS

APK 165P

Elettromedia 2019



audison.com



ideato,
progettato,
ingegnerizzato
in Italia

Prima

APK 165P

TOTAL POWER FOR
OEM INTEGRATION

The new Prima APK 165P two-way loudspeaker system, capable of handling up to 240 W peak, is the ideal combination to fully exploit the power of the AP F8.9 bit or all other Prima amplifiers used in high power configurations.

The exclusive AIF technology (Any Install Faceplate) of the AP 1P Tweeter provides the installer with 3 different faceplates for total application versatility and a significant reduction in installation time.

The woofer has been designed to perform at its best in OEM placements, combining excellent power handling and efficiency.



All specifications subject to change without notice_19.B

Prima

AP 1P TWEETER

AIF technology, to support OEM integration, provides the specialist with three different types of faceplates:

1. OEM, for an easy and correct factory placement
2. Mesh grille: to obtain the best compromise between protection and performance with a-pillar installations
3. Spoke grille: for maximum acoustic performance with a-pillar installations



Thanks to the AIF, the AP 1P tweeter expresses its full potential in every application scenario. It is supplied with three mounting accessories that make the AP 1P install a breeze:

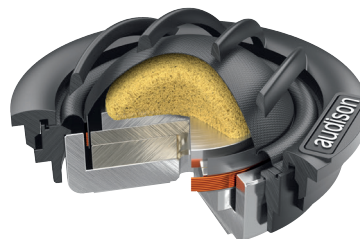
1. Watch band
2. Double-angle cup
3. Flush Mounting Ring
4. Metal mounting spring



Prima



The double Neodymium tablet used in the motor provides an excellent extension in high frequency and together with the 1" CCAW voice coil ensures an outstanding dynamic response.



AP 6.5P WOOFER

The AP 6.5P woofer features a very wide excursion to cope with the most important dynamic peaks without any compression. Its impressive magnetic assembly provides the energy needed for perfect control even during limit excursions. The CCAW (Copper-Clad Aluminium Wire) voice coil (32 x 14 mm, 1.25 x 0.55 in) optimally manages the greater applied power.



The basket was completely redesigned with the aid of simulations to lower the resistance of air flows, while maintaining compact sizes to facilitate the installation.

APCX P 2T, APCX P 2W CROSSOVERS

To minimize the overall dimensions and simplify the cables routing, thus facilitating the installer's work, the APK 165P system uses separate ultra-compact crossovers for tweeters and woofers, made with carefully selected and sized components to manage high power avoiding saturation phenomena.

The listening sessions for the crossover set-up made the choice fall on an asymmetric filtering, with a 12 dB/oct slope on the tweeter's hi-pass and 6 dB/oct for the woofer's lo-pass, for a natural reproduction of mid-high frequencies and well-defined low frequencies.



All specifications subject to change without notice_19.B



Elettromedia
62018 Potenza Picena (MC) Italy
T +39 0733 870 870 - F +39 0733 870 880
elettromedia.com



Prima

APK 165P

2-way system
345 W



TECHNICAL SPECIFICATIONS		
Component		2-way System
Woofer Size	mm (in.)	165 (6.5)
Tweeter Size	mm (in.)	29 (1.14)
Power Handling	W peak	345
	W continuous	115
Impedance	Ω	4
Frequency Response	Hz	50 ÷ 24k
Sensitivity	dB SPL/2.83Vrms/1m	92,5
AP 1P tweeter crossover	Name: APCX P 2T	Hi-Pass: 4 KHz @ 12dB/Oct.
AP 6.5P woofer crossover	Name: APCX P 2T	Low-Pass: 4 kHz @ 6 dB/Oct.
APCX P 2T crossover adjustment	dB	Tweeter Level; 0 / +3
Woofer Magnet size D x d x h	mm (in.)	100 x 40 x 18 (3.94 x 1.57 x 0.71)
	mm (in.)	24,9 x 3,2 x 3,5 + 22 x 2,5 (0.98 x 0.13 x 0.14) + (0.87 x 0.1)
Weight of one speaker	Woofer	1,45 (3.2)
	Tweeter	0,067 (0.15)
Voice Coil \emptyset	Woofer	32 (1.26)
	Tweeter	25 (1)

ELECTRO-ACOUSTIC PARAMETERS			
		Woofer	Tweeter
D	mm	132	29
Xmax	mm	5,6	-
Re	Ω	3,1	5,75
Fs	Hz	60	1600
Le	mH	0,29	0,04
Vas	l	11,40	-
Mms	g	14,6	0,23
Cms	mm/N	0,47	0,05
BL	T·m	5,35	2,7
Qts		0,55	1,21
Qes		0,60	1,74
Qms		7,6	4
Spl	dB/1W/1m	89,5	89,6

AP 1P

1. AIF technology (Any Install Faceplate) for total application versatility and a significant reduction in installation time
2. Three mounting accessories supplied to provide a solution for any type of installation
3. Magnetic group with double Neodymium tablet for an excellent high frequency extension
4. 1" CCAW voice coil for superior dynamic response
5. Dome profile optimized with FEM simulations for a wide off-axis dispersion

AP 6.5P

1. Increased excursion of the mobile group for a superior dynamic response
2. Optimized electro-acoustic parameters to maximize performance for OEM placements
3. Magnetic group sized for perfect control even at maximum cone excursion
4. CCAW (Copper-Clad Aluminium Wire) voice coil (32 x 14 mm) to optimally manage the greater applied power
5. Compact size basket for easy OEM installations

APCX P 2T, APCX P 2W

1. Separate ultra-compact crossovers for tweeters and woofers to minimize space requirements and simplify cable routing, facilitating the specialist work
2. Use of components selected and sized for the management of high power avoiding saturation
3. Asymmetric slope filtering, 12 dB/oct on the tweeter and 6 dB/oct on the woofer for an optimal balance between the two components

From R&D to final product
KLIPPEL
since 2005