

COMP SPL Show

ST 44

100W



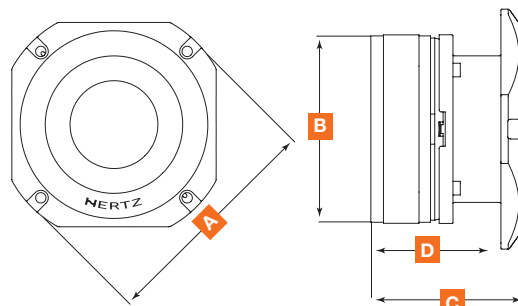
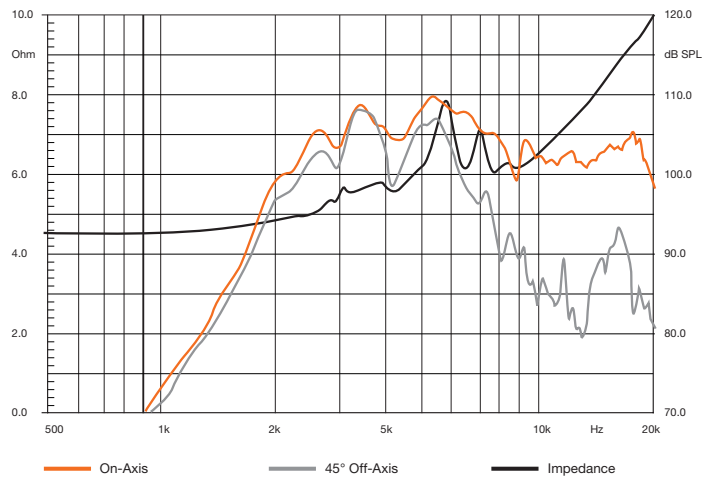
Technical Specifications

Component	High Efficiency Compression Driver	
Size	mm (in.)	44 (1.7)
Power handling		
W Peak	100	
W continuous	Hi-pass filtered @ 4,5 kHz - 12 dB Oct.	
Impedance	Ω	4
Frequency response	Hz	2,5k \div 20k
Sensitivity	dB/SPL	109
Voice coil \varnothing	mm (in.)	44 (1.7)
Magnet	High density flux ferrite	
Dome/Cone	Aluminium	
Weight of one component	kg (lb.)	1,56 (3.4)

1. High magnetic permeability plates provide constant, even flux.
2. High density flux ferrite magnet, for top SPL performance.
3. CCAR (Copper Clad Aluminium Ribbon) voice coil; for unheard-of thermal and mechanical capability.
4. Extralight aluminium membrane.
5. Anodized aluminium body; for maximum damping and vibration rejection.
6. High current, tin-plated terminals.
7. High efficiency compression loading horn.

Electro-Acoustic Parameters

D	mm	44
Xmax	mm	-
Re	Ω	3,9
Fs	Hz	1290
Le	mH @ 1 kHz	-
Le	mH @ 10 kHz	-
Vas	l	-
Mms	g	-
Cms	mm/N	-
BL	T•m	-
Qts	-	-
Qes	-	-
Qms	-	-
Spl	dB	109



A	115 mm (4.5 in.)
B	90 mm (3.6 in.)
C	74 mm (2.9 in.)
D	64,5 mm (2.6 in.)